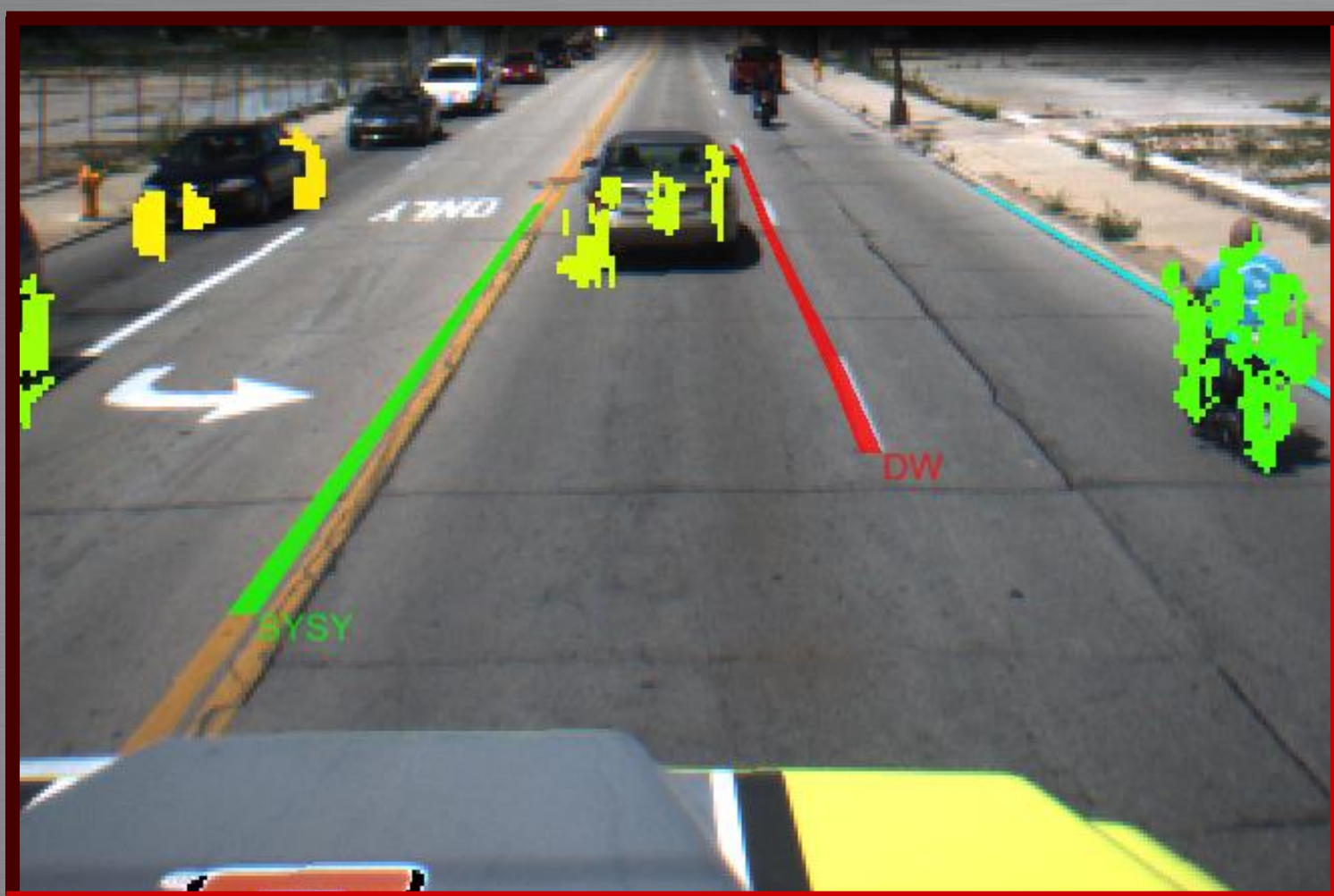


# TERRAMAX™

## Vision Systems

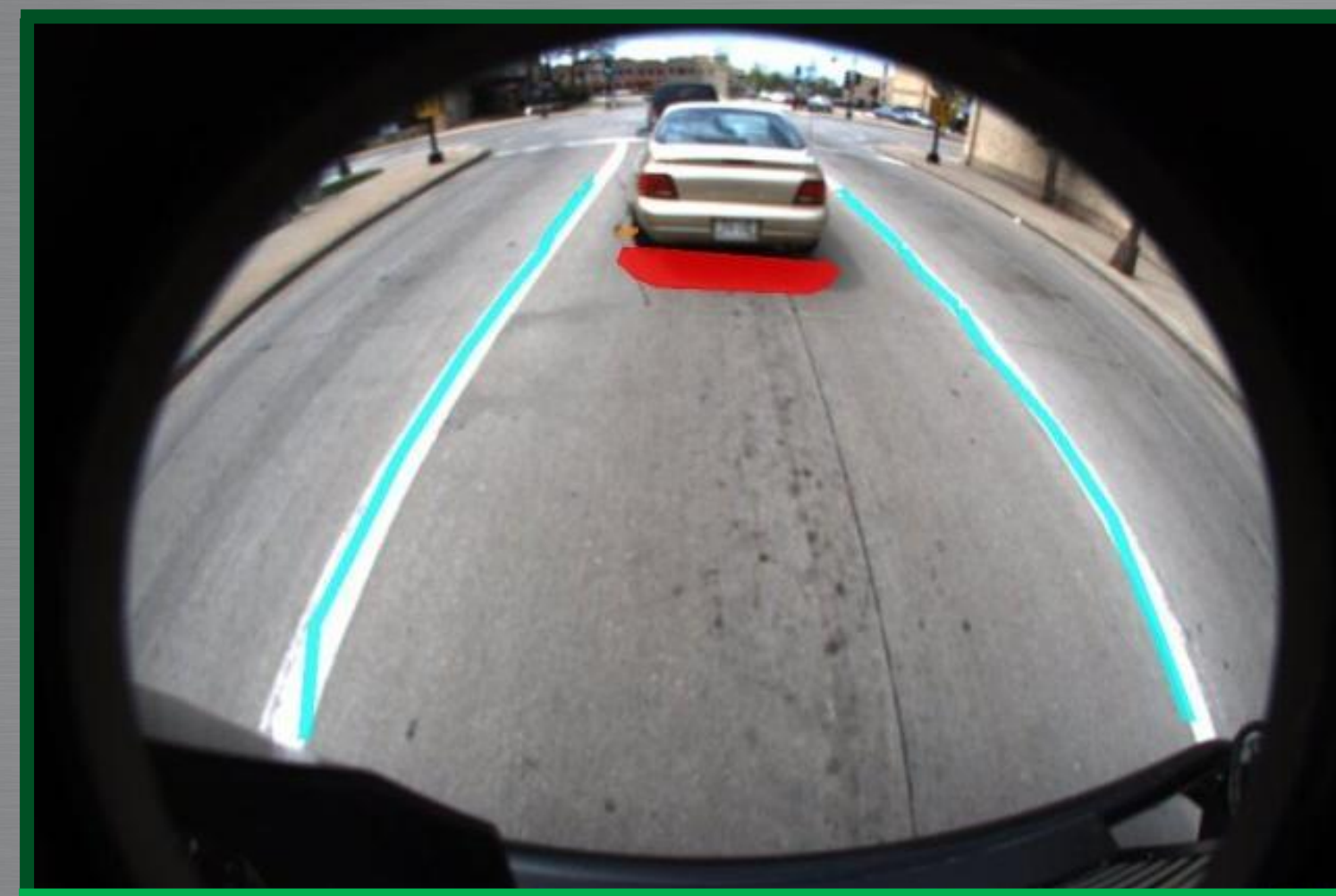


## URBAN CHALLENGE



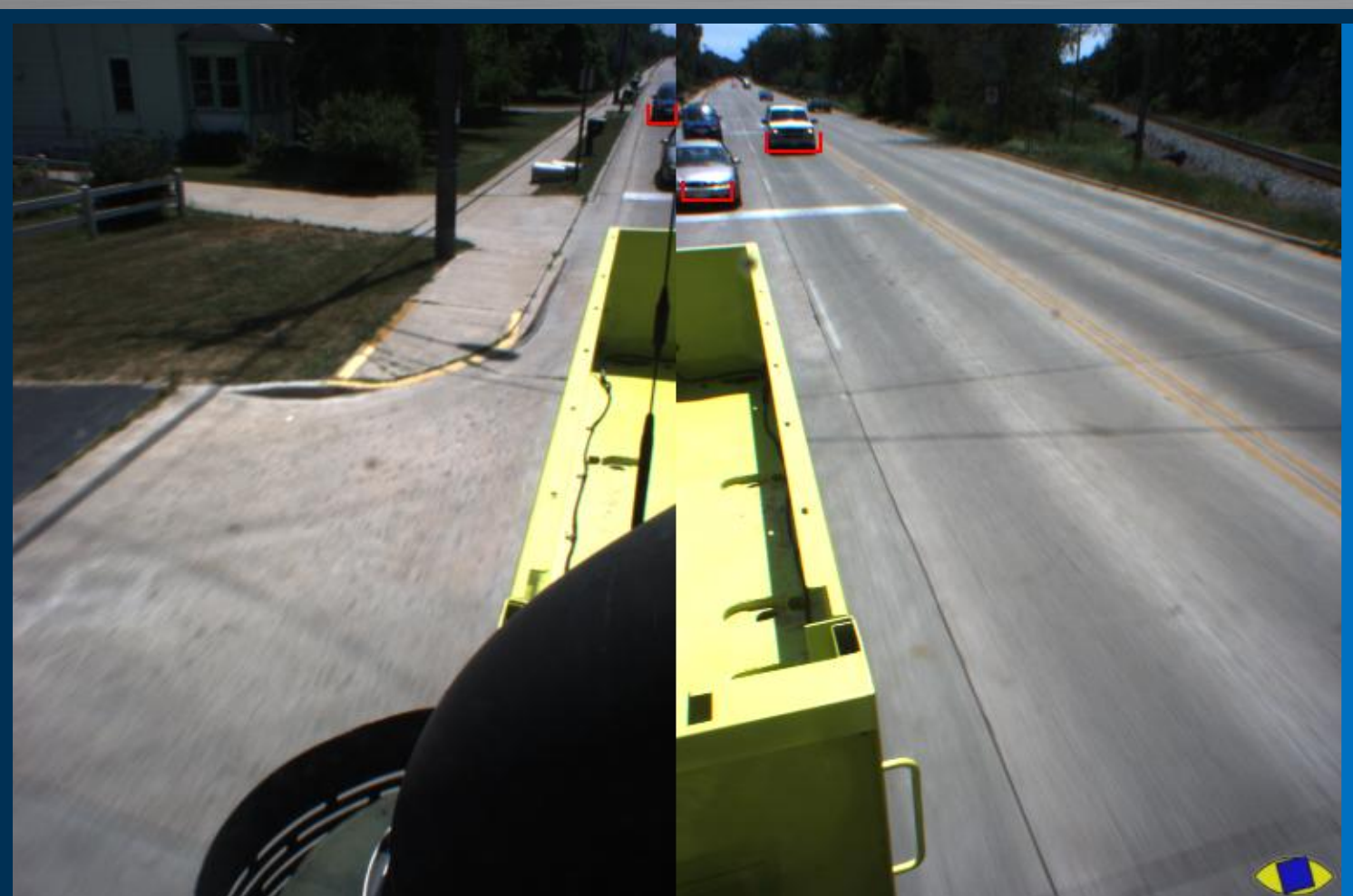
### Trino

- 3 cameras organized in 3 separate stereo systems
- speed-based active stereo system selection
- obstacle detection
- lane detection
- range: 7 → 50 m



### Stereo

- 4 camera with fisheye lenses organized as 2 separate stereo systems (front and back)
- obstacle detection
- lane & stopline detection
- range: 0 → 10 m  
-6.5 → -16.5 m



### Rear

- 2 camera working as 2 separate monocular optical flow-based systems
- overtaking vehicles detection
- range: -4 → -50 m



### Lateral

- 2 high resolution cameras working as 2 separate monocular systems
- vehicle detection for traffic merge manoeuvres
- range: 10 → 130 m

